



CONVERSION TO SHORT BARREL SHOTGUN

92514 RETROFIT KIT
FOR 500®, 590® AND 590A1™

IMPORTANT “SAFETY WARNINGS” — NOTE THE SYMBOL:



Refer to your firearms Owner's Manual (shipped with your firearm) for safety warnings and safe handling information. Manuals are also available online at www.mossberg.com.



Before any attempt is made to retrofit your firearm, move the safety button fully rearward to the “ON” (SAFE) position. Visually and physically inspect the chamber, elevator and magazine tube to make sure that your firearm is unloaded. Keep the muzzle pointed in a safe direction at all times.



WARNING: SHOTGUN BARRELS LESS THAN 18” - ALL NFA RULES APPLY. Shotguns and Firearms with smooth bore barrels that are less than 18” in length are restricted and classified under the National Firearms Act. Before making a Short Barreled Shotgun (SBS) or Any Other Weapon (AOW), a non-licensee or FFL who has not paid the Special Occupation Tax (SOT) is required to register any NFA firearm via an [ATF Form 1](#) (5320.1) and pay the required \$200.00 tax prior to acquisition of the parts required to assemble such firearm.

For more information about the National Firearms Act, visit www.atf.gov.

For more information about the guns that fall under the purview of the National Firearms Act, visit www.atf.gov/firearms/firearms-guide-identification-firearms-within-purview-national-firearms-act.

O.F. MOSSBERG & SONS, INC.

P.O. BOX 497 • 7 GRASSO AVENUE, NORTH HAVEN, CT 06473

PHONE (800) 363-3555

www.mossberg.com

Safety and safe firearms handling is everyone's responsibility.

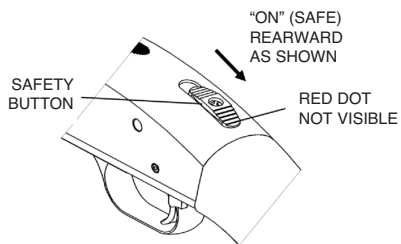


Fig. 1a

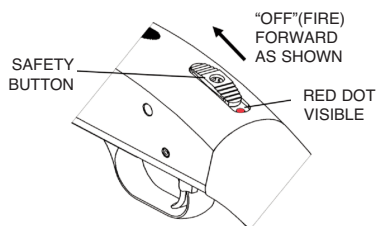


Fig. 1b

A note about the warnings and information contained in this Manual:

We strongly suggest that you check with your local licensed retailer or state police for additional information concerning firearms ownership, or hunting or target shooting rules that may be required by local law or regulation. Since such rules and regulations are subject to change, local authorities are in the best position to advise you on such matters.

TABLE OF CONTENTS

| | Page |
|--|------------|
| Disassemble the Firearm | 3 |
| Remove Magazine Components | 3 |
| Remove Magazine Tube | 3 |
| Disassemble Forearm Assembly..... | 4 |
| Reassemble Forearm Assembly | 4 |
| Attach Magazine Tube | 4 |
| Assemble Magazine Components..... | 5 |
| Reassemble the Firearm | 5 |
| Function Test..... | 5 |
| Exploded View | 6 |
| Parts List | 6 |
| Notes | 7 |
| Basic Rules of Safe Firearms Handling..... | Back Cover |



WARNING: This product can expose you to chemicals, including lead, which are known to the State of California to cause cancer and birth defects or other reproductive harm. For more information go to www.P65Warnings.ca.gov.

DISASSEMBLE THE FIREARM

With your firearm pointed in a safe direction, visually and physically inspect the chamber, elevator and magazine tube to make sure that your firearm is unloaded. Then using the instructions provided in the Owner's Manual (shipped with your firearm), perform the described disassembly. Owner's Manuals and instruction sheets may also be found on the Mossberg website at, www.mossberg.com.

REMOVE MAGAZINE COMPONENTS



The magazine spring retainer and spring are under significant spring pressure. Use caution when removing to prevent injury to yourself or others around you.

Using a flat screwdriver, carefully pry the magazine spring retainer out of the magazine. Allow the magazine spring to extend slowly. Remove the magazine spring (Fig. 2).

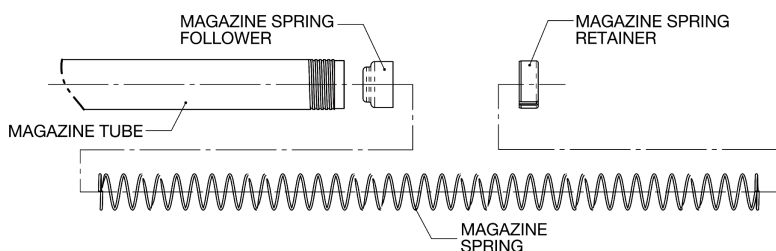


Fig. 2

REMOVE MAGAZINE TUBE

NOTE: Magazine tube is screwed into receiver using Loctite®. Solvent or careful application of heat may be used to soften the Loctite® bond.

NOTE: Inside of vise jaws should be lined with leather or other suitable material to prevent scratching of magazine tube.

NOTE: A metal, plastic or hardwood plug of proper diameter can be used inside the end of the magazine tube to prevent it being crushed in the vise.

NOTE: A strap wrench may be used instead of the vise to grip and turn the magazine tube.

Insert forward end of magazine tube into a vise no more than 1" and tighten vise. Avoid crushing magazine tube.

Insert block into receiver. Unscrew the magazine tube assembly by rotating block and receiver counterclockwise (Fig. 3).

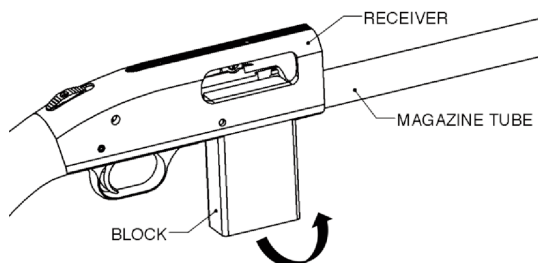


Fig. 3

DISASSEMBLE FOREARM ASSEMBLY

NOTE: This kit comes with the forearm assembled - skip to "ATTACH MAGAZINE TUBE" unless you plan to use an aftermarket forearm.

Engage the lugs of a 500 Forend Wrench (Brownells 080-777-004WB) into slots in the action slide tube nut (Fig. 4) and unscrew action slide tube nut counterclockwise.

Slide the forearm off the action slide tube assembly.

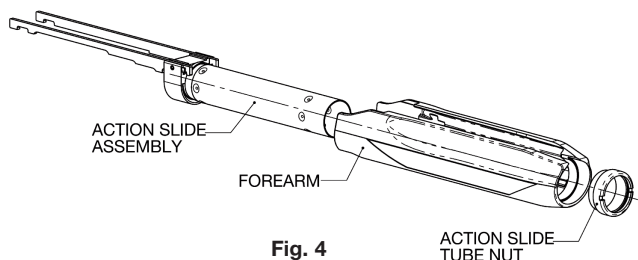


Fig. 4

REASSEMBLE FOREARM ASSEMBLY

Slide forearm over the action slide assembly. To avoid cross threading, start threading action slide tube nut to action slide assembly by hand. Engage the lugs of a 500 Forend Wrench (Brownells 080-777-004WB) into slots in the action slide tube nut (Fig. 4) and screw action slide tube nut clockwise to tighten.

NOTE: If you are installing an aftermarket forearm, refer to the manufacturer's literature for specific assembly instructions.

ATTACH MAGAZINE TUBE

Remove all debris and oil or grease from the threads in the receiver and on the new magazine tube from this kit.

Apply high strength Loctite® compound 2760 to magazine tube threads.

NOTE: Inside of vise jaws should be lined with leather or other suitable material to prevent scratching of tube.

NOTE: A metal, plastic or hardwood plug of proper diameter can be used inside the end of the magazine tube to prevent it being crushed in the vise.

NOTE: A strap wrench may be used instead of the vise to grip and turn the magazine tube

Insert forward end of new magazine tube from this kit into a vise no more than 1" and tighten vise. Avoid crushing magazine tube.

Insert block into receiver. Screw in the magazine tube assembly by rotating block and receiver clockwise (Fig. 5).

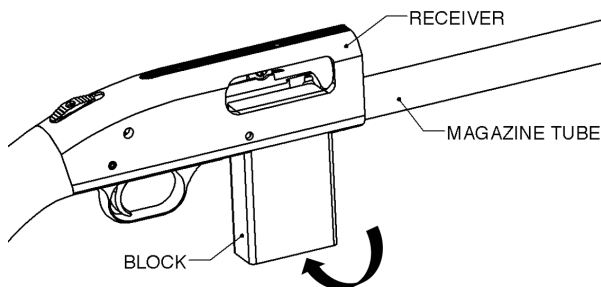


Fig. 5

ASSEMBLE MAGAZINE COMPONENTS

Reinsert the magazine spring follower and insert the new magazine spring from this kit into the magazine tube.

Compress the spring and push the new magazine spring retainer from this kit into the end of the tube (Fig. 6).

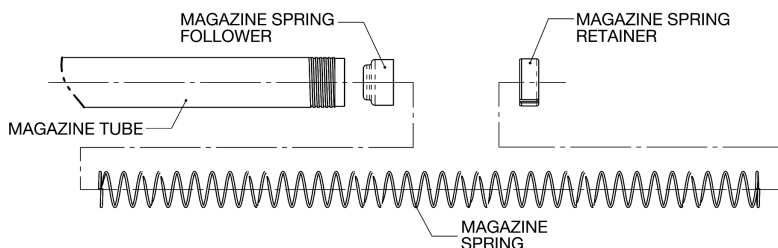


Fig. 6

REASSEMBLE THE FIREARM

Using the instructions provided in the Owner's Manual (shipped with your firearm), perform the described reassembly, attaching the new forearm/action slide assembly and barrel assembly from this kit. Owner's Manuals and instruction sheets may also be found on the Mossberg website at, www.mossberg.com.

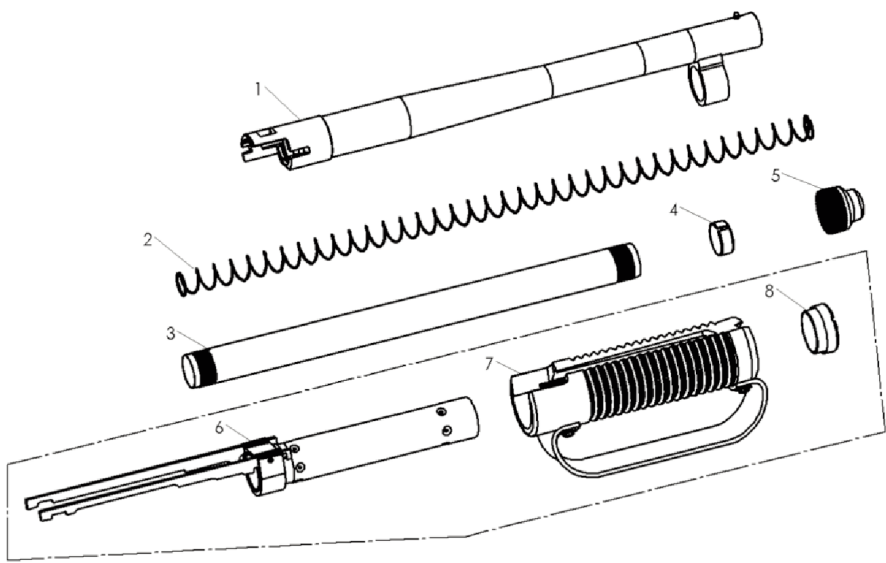
FUNCTION TEST

With your firearm pointed in a safe direction, visually and physically inspect the chamber, elevator and magazine tube to make sure that your firearm is unloaded. Then using the instructions provided in the Owner's Manual (shipped with your firearm), perform a complete function test. Owner's Manuals and instruction sheets may also be found on the Mossberg website at, www.mossberg.com.



IF YOUR FIREARM DOES NOT PERFORM AS DESCRIBED IN THE FUNCTION TESTING SECTION OF THE OWNER'S MANUAL, CONTACT THE FACTORY AUTHORIZED PRODUCT SERVICE CENTER IMMEDIATELY. DO NOT ATTEMPT TO USE THE FIREARM.

EXPLODED VIEW



PARTS LIST

| ITEM | DESCRIPTION |
|-------------------------------------|--------------------------|
| 1 | BARREL ASSEMBLY |
| 2 | MAGAZINE SPRING |
| 3 | MAGAZINE TUBE |
| 4 | MAGAZINE SPRING RETAINER |
| 5 | MAGAZINE CAP |
| 6* | ACTION SLIDE ASSEMBLY |
| 7* | FOREARM ASSEMBLY |
| 8* | ACTION SLIDE TUBE NUT |
| * ITEMS 6-8 COME ASSEMBLED TOGETHER | |

NOTES

| |
|--|
| |
|--|

FIREARMS SAFETY DEPENDS ON YOU. MAKE NO MISTAKE ABOUT IT!

From the time an individual picks up a firearm, that individual shooter becomes a part of a system over which he or she has complete control. He or she is the only part of the system that can make a gun safe – or unsafe. Hunting and target shooting are among the safest of all sports. This booklet is intended to make them even safer – by re-emphasizing and reaffirming the basics of safe gun handling and storage and by reminding each individual shooter that he or she is the key to firearms safety. You can help meet this responsibility by enrolling in hunter safety or shooting safety courses. You must constantly stress safety when handling firearms, especially to children and non-shooters. Newcomers in particular must be closely supervised when handling firearms with which they may not be acquainted. Don't be timid when it comes to gun safety. If you observe anyone violating any safety precautions, you have an obligation to suggest safer handling practices, such as those in this booklet. Please read these rules carefully and follow the safety procedures outlined. Firearms safety is up to you. Make no mistake about it.

- 1. ALWAYS KEEP THE MUZZLE POINTED IN A SAFE DIRECTION**
- 2. FIREARMS SHOULD BE UNLOADED WHEN NOT ACTUALLY IN USE**
- 3. DON'T RELY ON YOUR GUN'S "SAFETY"**
- 4. BE SURE OF YOUR TARGET AND WHAT'S BEYOND IT**
- 5. USE CORRECT AMMUNITION**
- 6. IF YOUR GUN FAILS TO FIRE WHEN THE TRIGGER IS PULLED, HANDLE WITH CARE**
- 7. ALWAYS WEAR EYE AND EAR PROTECTION WHEN SHOOTING**
- 8. BE SURE THE BARREL IS CLEAR OF OBSTRUCTIONS BEFORE SHOOTING**
- 9. DO NOT ALTER OR MODIFY YOUR GUN, AND HAVE GUNS SERVICED REGULARLY**
- 10. LEARN THE MECHANICAL AND HANDLING CHARACTERISTICS OF THE FIREARM YOU ARE USING**

*Courtesy of
Sporting Arms and Ammunition Manufacturers' Institute, Inc.*